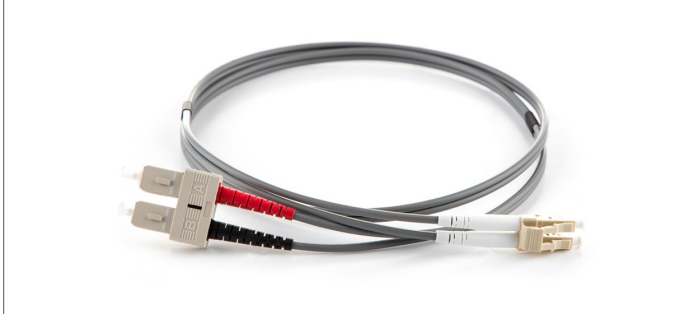


ALTIMEX OM1 62.5/125 LC - SC DUPLEX FIBRE OPTIC PATCH CORDS



ALTIMEX OM1 multimode patch cords are used in legacy 1000Base networks common in LAN applications. All assemblies are fully tested prior to delivery and supplied with test results. Most common connector types, configurations and lengths are available from stock, using 3mm (for additional ruggedising) or 2mm diameter cable on request. ALTIMEX OM1 multimode patch cords are supplied with a grey LSZH cable jacket as standard. Non-stocked configurations (length, colour, connectors and cable type) can be manufactured to meet specific requirements.

Applications.

LAN/Enterprise and legacy networks
For use in 1GB/s networks over >275M indicative link
length at 850nm (SX) wavelength

Features.

SC, LC, and ST connectors as standard, other connectors available
LSZH - Low smoke zero halogen, grey jacket
900µm / 600µm tight buffer, 3mm simplex and duplex
cable (2mm cable on request)
Available in other colours
Armoured, round duplex and flat twin patch cords also
available
OM1 fibre conforms to or exceeds all relevant ISO/IEC,
TIA/EIA and ITU standards
All patch cords come with a UPC polished connector
end face as standard

Product specification subject to change without prior notice.

Fibre Specification.

Attenuation (db/km)	$\leq 2.7 @ 850\text{nm} / \leq 0.6 @ 1300\text{nm}$
Overfilled Modal Bandwidth (MHz x km)	$\geq 200 @ 850\text{nm} / \geq 500 @ 1300\text{nm}$

Cable Specification.

	SIMPLEX	DUPLEX
Cable Material	LSZH	LSZH
Strength Member	Aramid	Aramid
Crush (N/100mm)	1000	1000
Tensile (N)	120	120
Operating Temperature (°C)	-20 to 60	-20 to 60

Connector Specification.

IL Max/Master (db) (Acceptance)	≤ 0.25
Av./Random (db)	≤ 0.20

Product specification subject to change without prior notice.