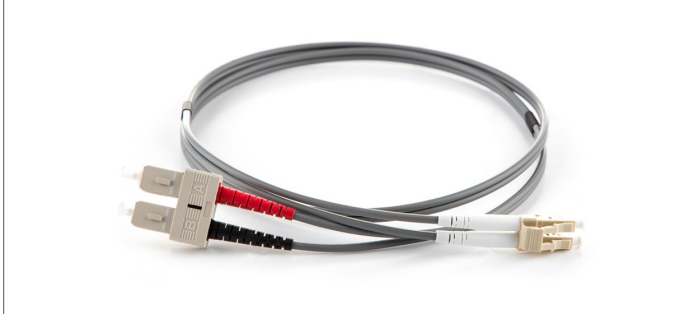


# ALTIMEX OM1 62.5/125 SC - SC DUPLEX FIBRE OPTIC PATCH CORDS



ALTIMEX OM1 multimode patch cords are used in legacy 1000Base networks common in LAN applications. All assemblies are fully tested prior to delivery and supplied with test results. Most common connector types, configurations and lengths are available from stock, using 3mm (for additional ruggedising) or 2mm diameter cable on request. OM1 multimode patch cords are supplied with a grey LSZH cable jacket as standard. Non-stocked configurations (length, colour, connectors and cable type) can be manufactured to meet specific requirements.

## Applications.

LAN/Enterprise and legacy networks  
For use in 1GB/s networks over >275M indicative link  
length at 850nm (SX) wavelength

## Features.

SC, LC, and ST connectors as standard, other connectors available  
LSZH - Low smoke zero halogen, grey jacket  
900µm / 600µm tight buffer, 3mm simplex and duplex cable (2mm cable on request)  
Available in other colours  
Armoured, round duplex and flat twin patch cords also available  
OM1 fibre conforms to or exceeds all relevant ISO/IEC, TIA/EIA and ITU standards  
All patch cords come with a UPC polished connector end face as standard

Product specification subject to change without prior notice.

### Fibre Specification.

Attenuation (db/km)	$\leq 2.7 @ 850\text{nm} / \leq 0.6 @ 1300\text{nm}$
Overfilled Modal Bandwidth (MHz x km)	$\geq 200 @ 850\text{nm} / \geq 500 @ 1300\text{nm}$

### Cable Specification.

	SIMPLEX	DUPLEX
Cable Material	LSZH	LSZH
Strength Member	Aramid	Aramid
Crush (N/100mm)	1000	1000
Tensile (N)	120	120
Operating Temperature (°C)	-20 to 60	-20 to 60

### Connector Specification.

IL Max/Master (db) (Acceptance)	$\leq 0.25$
Av./Random (db)	$\leq 0.20$

Product specification subject to change without prior notice.